

Poole Grammar School

# SIXTH FORM PROSPECTUS

Compassion - Integrity - Motivation  
Respect - Teamwork - Wisdom



# Welcome

Thank you for considering Poole Grammar Sixth Form. Our students thrive in an academic environment with expert teachers who will support and challenge you both in terms of exam results and being prepared for your next steps.

We are delighted to be able to offer you a wide choice of courses (see our website for more details). There is no entrance test to join year 12; instead we require an average GCSE grade of 5.5 across seven subjects, and a grade 5 in both maths and English language. Subject-specific entry requirements apply to each A level offered.

Life in the sixth form is not only about academic success but also personal and social development. We offer a range of extra-curricular activities and you can enjoy the benefits of our new gym and climbing wall.

The majority of our students go onto university, often to highly-regarded institutions including Oxford and Cambridge. Other students go into competitive high-level apprenticeships or straight into exciting career pathways.

I hope this guide gives you a flavour of our sixth form and that you will take the opportunity to find out more about us. I look forward to welcoming you to Poole Grammar School.

## **Mr Pete Ingleby**

Head of Sixth Form

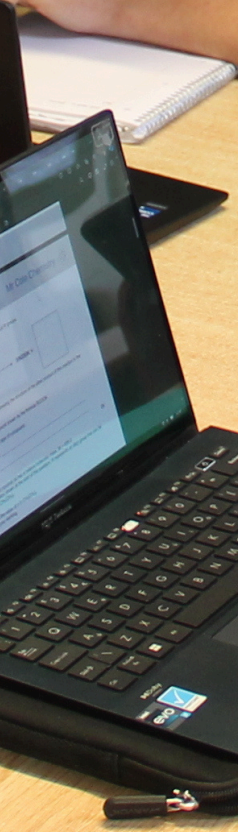
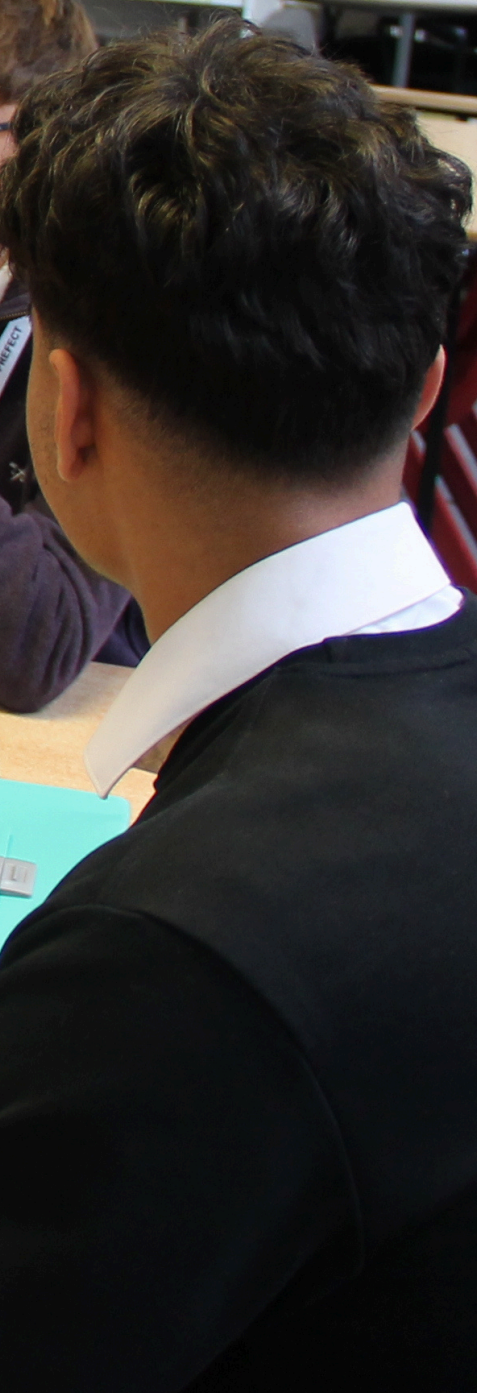


ISTRY

570 BIOLOGY

590 ZOOLOGY

610 MEDICINE  
& HEALTH



# Study

Sixth form students enjoy more freedom than they have been used to, including periods on their timetable where no lesson is scheduled. In these study periods students use our well stocked library to do independent work. They can access computers and a choice of supervised and unsupervised study areas around the school. They can also choose to study at home at certain times of the year, subject to meeting our home-study criteria.

For a highly focused environment students opt to use the study centre with a range of textbooks as well as IT facilities. Here we help students to make the best progress in their learning by offering bespoke support from dedicated staff or mentoring from a fellow student in a particular subject.

Students with Special Educational Needs and Disabilities benefit from our Sixth Form SEND base. This smaller, more supportive environment eases the anxiety that some students feel, allowing them to make better progress on their work.

'Oxbridge' applicants are offered specialist support with their preparation for university, and our MedSoc supports our aspiring medical students so that their applications are as strong as possible.





# Sport

The new sports hall opened in 2023. Students can use the fitness suite before and after school for free. Our weekly climbing club makes good use of the climbing wall.

Sixth formers participate in games lessons every week and enjoy a broad choice of activity. We field teams to play other schools in football, rugby and hockey. Most students play sport for fun regularly including in the weekly inter-tutor football matches which are a highlight of Friday lunchtimes. We also offer cricket, cross-country and athletics events.



# The Gilpin Cup

The centrepiece of our sixth form extra-curricular offer is the Gilpin Cup. This year-long contest sees each of our sixth form tutor groups take part in all sorts of rounds. Rowing, tug-of-war and our sports day dry triathlon have all featured in the sporting section of the cup, alongside the ever-popular football tournament. The University Challenge competition puts general knowledge in the spotlight, copying the format of the long-running television show. The chess, photography and stocks and shares events give individuals a chance to shine and earn points for their teams.







# Other extra-curricular

Our debating society for students from Poole and Parkstone Grammar Schools sees lively debate on a broad range of subjects.

Musical ensembles include Big Band, Jazz Band, Brass Ensemble, Woodwind Ensemble, Strings Group, Percussion Ensemble, Orchestra and PGS Voices. A selection of these groups can be seen performing in each of our termly concerts. Students also organise and perform in the hugely popular 'Battle of the Bands' competition.

Poole and Parkstone Grammar Schools stage a large-scale musical theatre production every autumn term, hosted by each school in alternate years. Every show involves students from both schools onstage, in the orchestra, and in backstage technical roles. In addition, sixth formers also direct and produce a student play production each year in the spring term.



# Leadership

Students volunteer to help others in the school community, adding valuable experience and skills to future university or job applications. Some become classroom assistants, helping younger students in lessons. Others train as peer mentors, guiding and tutoring others and sharing their expertise in their chosen subjects. Still others choose to supervise students doing homework in computer rooms at lunchtimes.

We hold a competitive application process each year for those who want to be a prefect. These students take on varied tasks interacting with pupils, parents, staff and the public. Prefects become recognised role models and trusted friendly faces to students in the main school. They are led by our senior prefects who have even more responsibility entrusted to them. The whole prefect team makes a hugely valuable contribution to our school community.



**[www.poolegrammar.com](http://www.poolegrammar.com)**

Poole Grammar School, Gravel Hill,  
Poole, Dorset, BH17 9JU

[pgsoffice@poolegrammar.com](mailto:pgsoffice@poolegrammar.com)

01202 692132

